

Assignments and Activities - 7

Task 1: Test your understanding

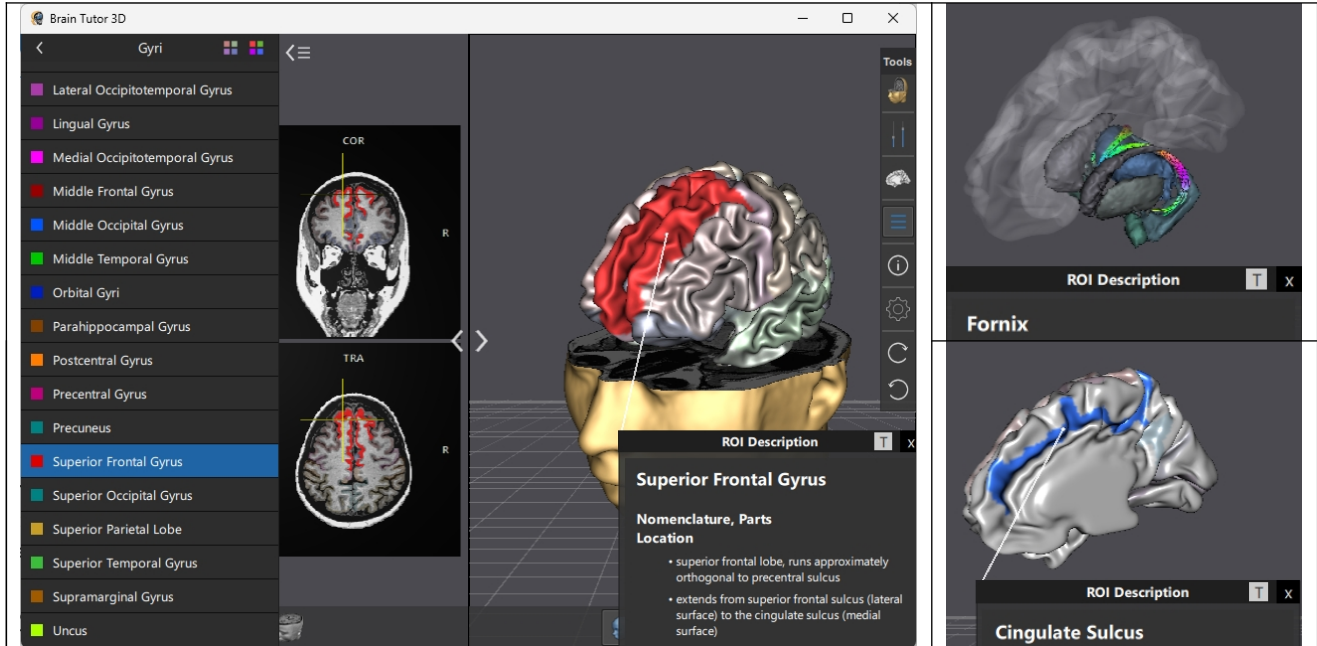
Question 1: Imagine that you are a neurosurgeon, about to remove a tumor lodged deep inside the brain. The top of the skull has been removed. What now lies between you and the brain? Which layer(s) must be cut before you reach the CSF?

Question 2: Is the myelin sheath of optic nerve axons provided by Schwann cells or oligodendroglia? Why?

Task 2: Neuroanatomical Atlas

Download BrainVoyager Brain Tutor from:

<https://www.brainvoyager.com/downloads/downloads.html> or the course repository.



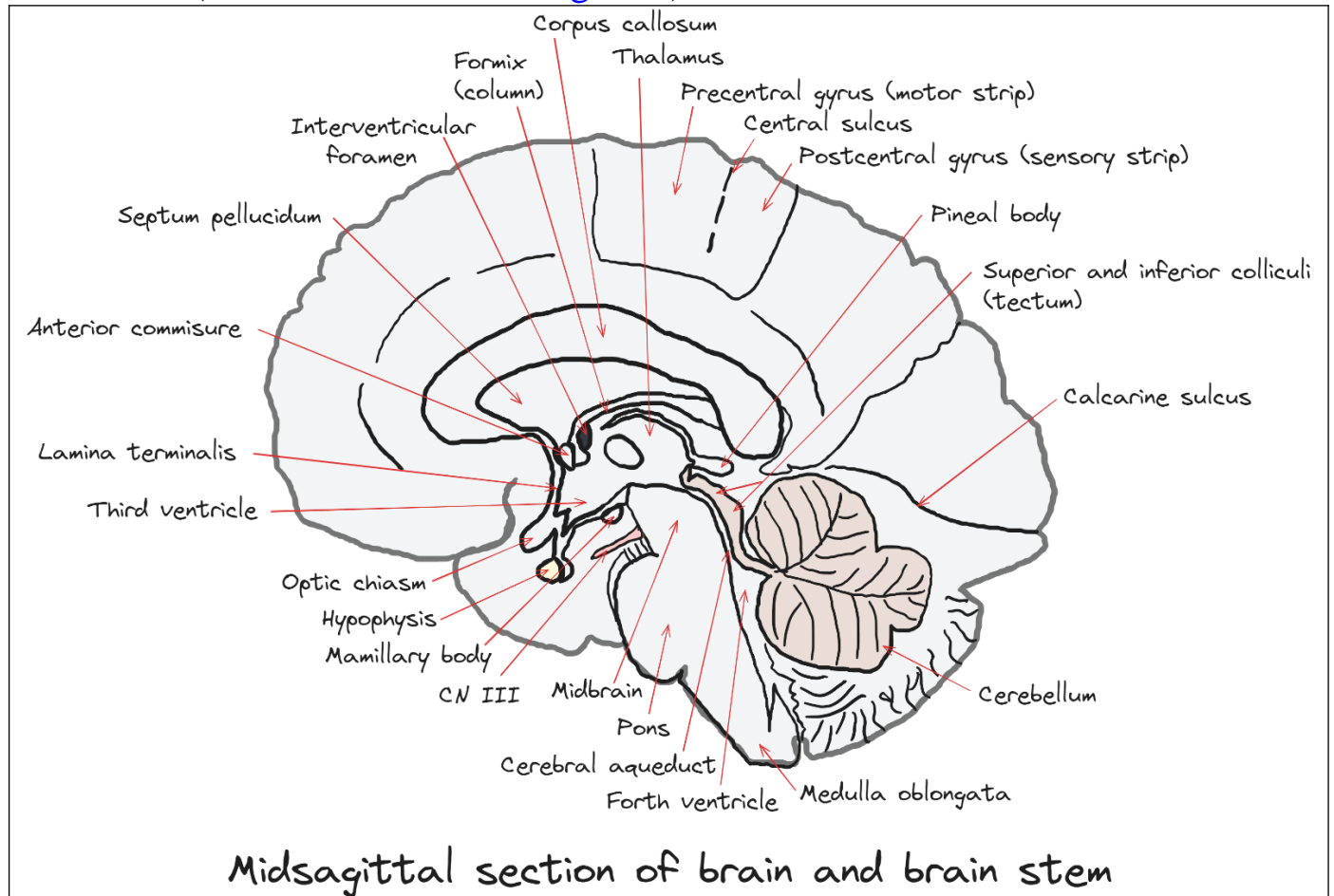
- I. Identify the following major anatomical landmarks, read their presentation text and paste a small screenshot to prove you visited each of them.

Landmark	Screenshot
1. Occipital lobe	
2. Postcentral gyrus	
3. Hippocampus	
4. Thalamus	
5. Lateral sulcus	
6. Corpus callosum	

- II. Investigate brain regions involved in language. What Brodmann area contains Broca's area? What Brodmann area contains Wernicke's area?

Task 3: Draw me a Brain Ep. 7

Draw this ([link to editable drawing here](#)):



Your turn: